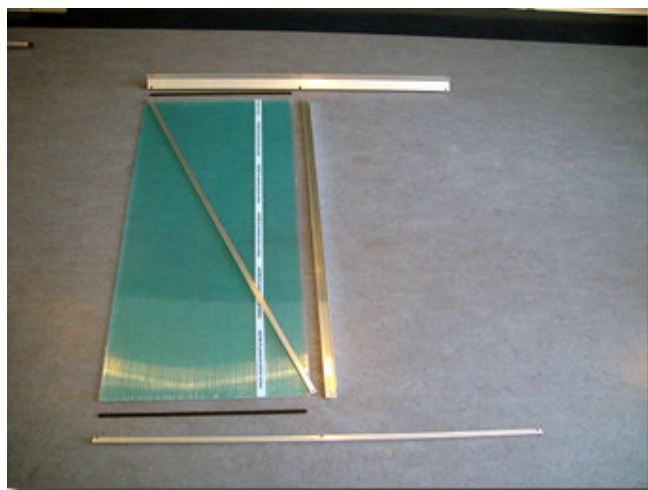
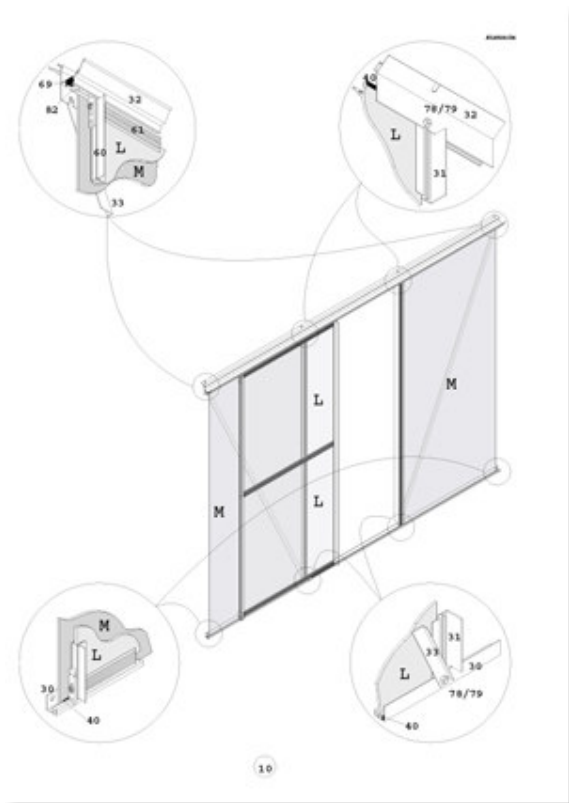


## Assembling the front

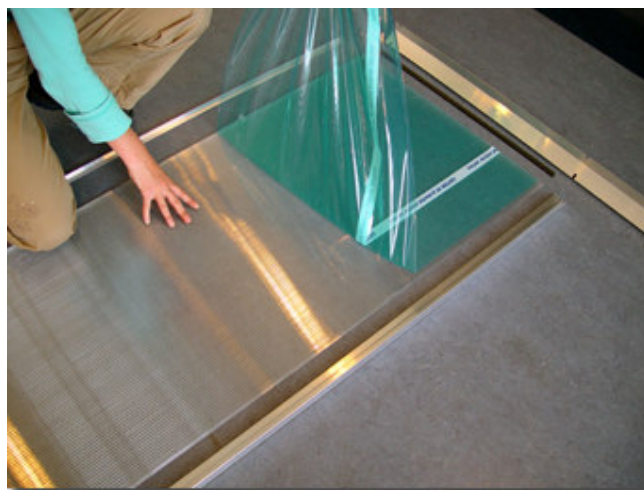
Page 10 of the assembly instructions details how to assemble the front of your greenhouse.

You will need the following parts:

- 1 x base sill no. 30
- 1 x gutter no. 32
- 1 x roof glazing bar no. 31
- 1 x diagonal brace no. 33
- 2 x nuts and bolts no. 78 and 79
- 1 x polycarbonate sheet M
- 2 x glazing strips no. 40
- 1 x door



Position all of the parts on the floor ready to fix them together.



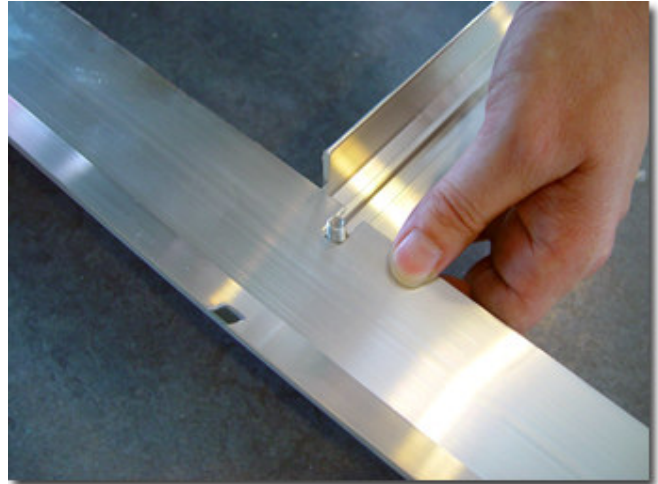
Each of the polycarbonate sheets is covered with a protective film

to indicate which side faces outwards. It is important that you mount them the correct way round as only one side is UV protected.

Remove the protective film.

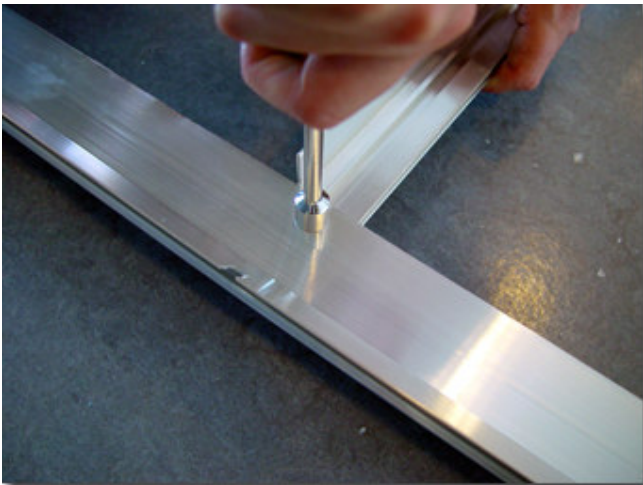


Slot bolt no. 78 into glazing bar no. 31.

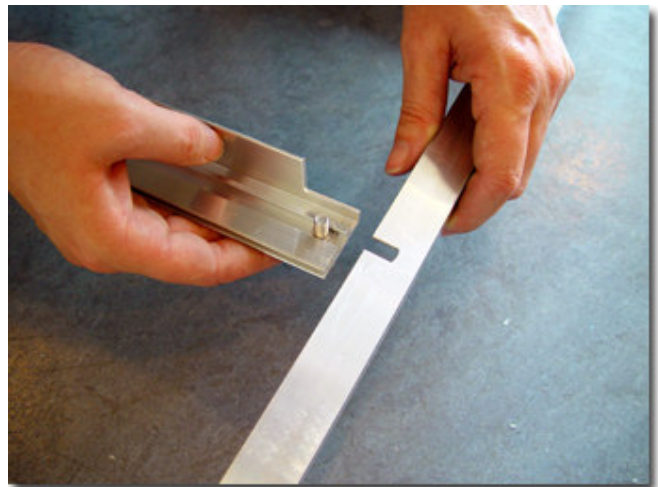


Fix glazing bar no. 31 to gutter no. 32 using nut no. 79

Please ensure you turn the gutter the right way round.



Glazing bar no. 31 and gutter no. 32 are fitted together with nut no. 79.

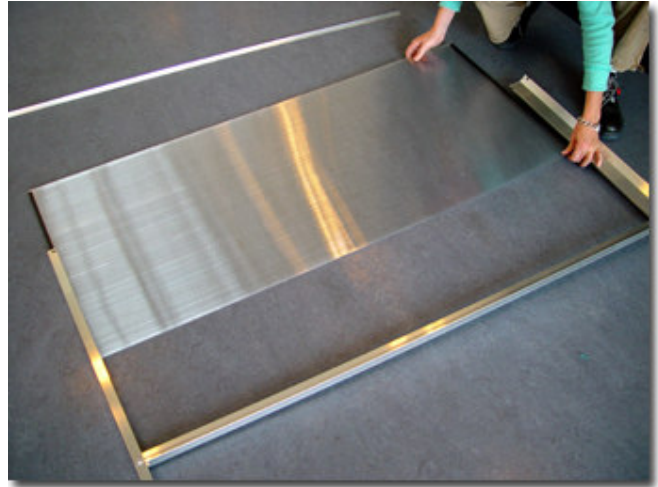


The glazing bar no. 31 is fixed to the base sill no. 30

Please ensure that the drainage lip faces outwards.

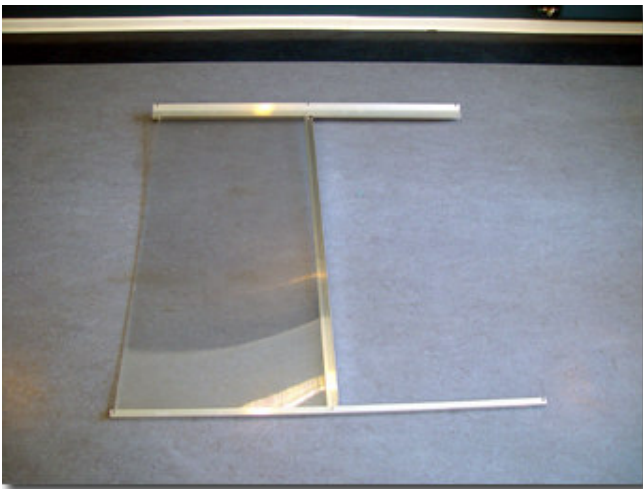


Fixing the glazingbar no. 31 and base sill no. 30 with nut no. 79.



Fix the glazing strip to the polycarbonate sheet M and push into the frame.

Ensure that it is fixed firmly in the channels.



Although the assembly instructions advise you to mount the diagonal brace no. 33 and the door next, we suggest that you attach the front to the gables first and then mount the diagonal brace and door afterwards.

The front is now finished.

---